



# 7816 De-palletizing and Transporting by Forklift

September 2023

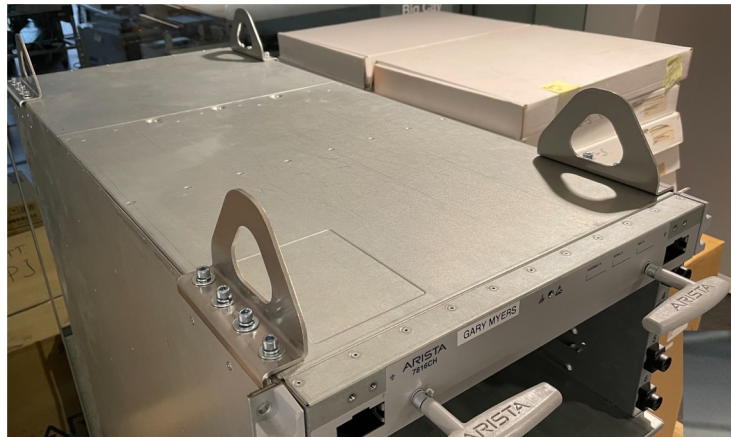
78-0107-01

# 7816 Shipping Pallet and Pack

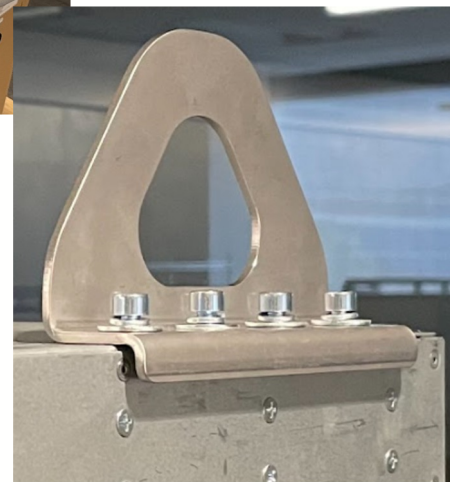
- 7816 will come packed on an engineered pallet (see below)
- Rack kit basket attached and nested on top of chassis
- Accessory kit includes rack kit mounting template for locating basket in the rack



# 7816 on Pallet and Production Lifting Brackets



- Lifting brackets and mounting hardware included in accessory kit shipped with chassis



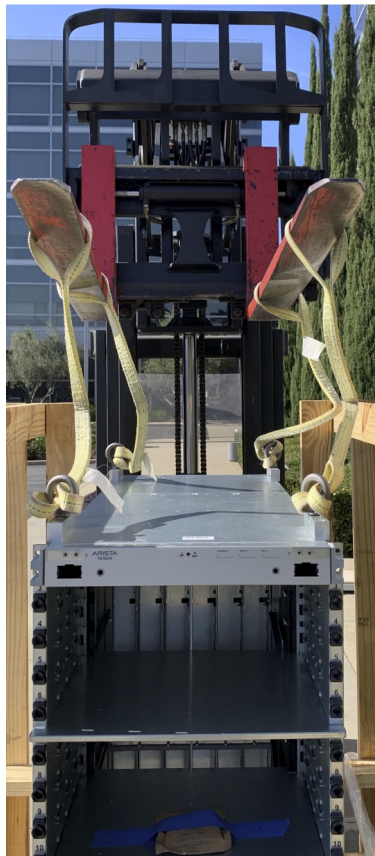
# 7816 Removal from Pallet

Note: Prototype pallet and lifting brackets shown

- Once attaching the lifting brackets, lifting straps are used to lift chassis off of the pallet

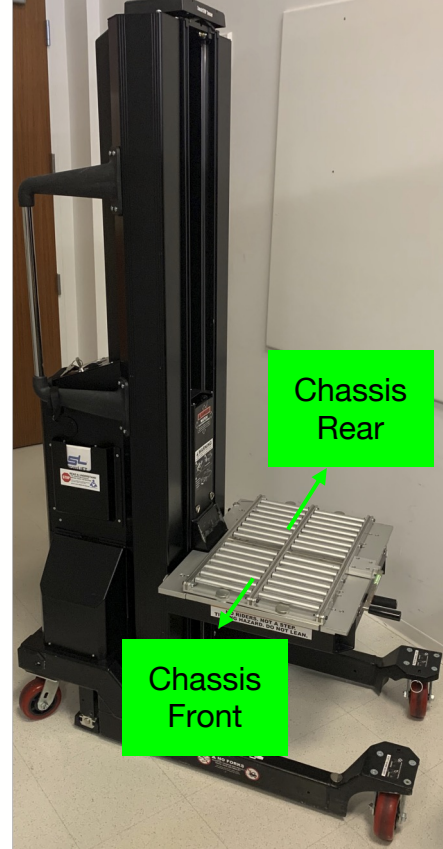


- Recommend using 1000lb (450kg) lifting straps
  - (e.g. McMaster)



# Transport Lift Recommendations

- Arista utilizes the 'Server Lift SL-1000X' to transport, all 7800 series systems to the installation point.
  - 1000 lbs / 450kg capacity
  - Battery operated/motorized
  - Integrated rollers with lockout
- The lift is used to raise and slide the 7800 system into the rack basket
- **Note: For safety and convenience, 7816 Series systems must be transported without LC's and FM's**



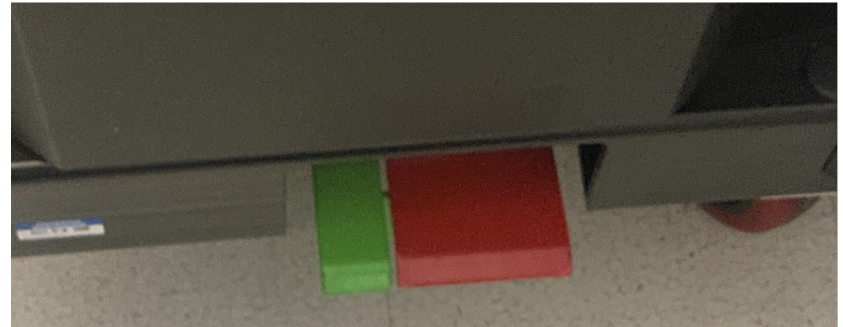
# Server Lift SL-1000X - Transport Lift

Support platen in neutral and translated positions



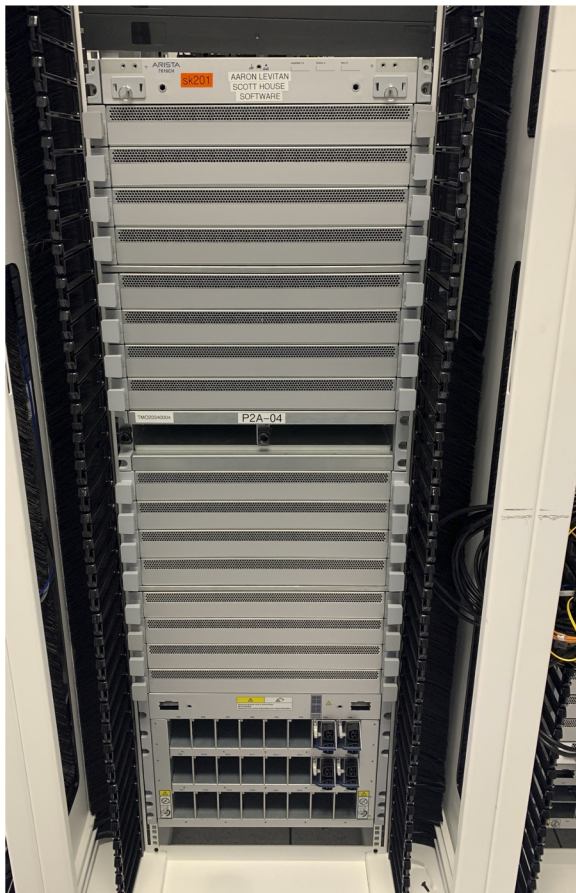
# Server Lift SL-1000X - Transport Lift

Built in locking feature to secure lift when sliding chassis into rack, foot pedal actuated



# Rack Mounted 7816 - LC and FM Views

Front and rear views of chassis mounted in a rack







# Thank You

[www.arista.com](http://www.arista.com)