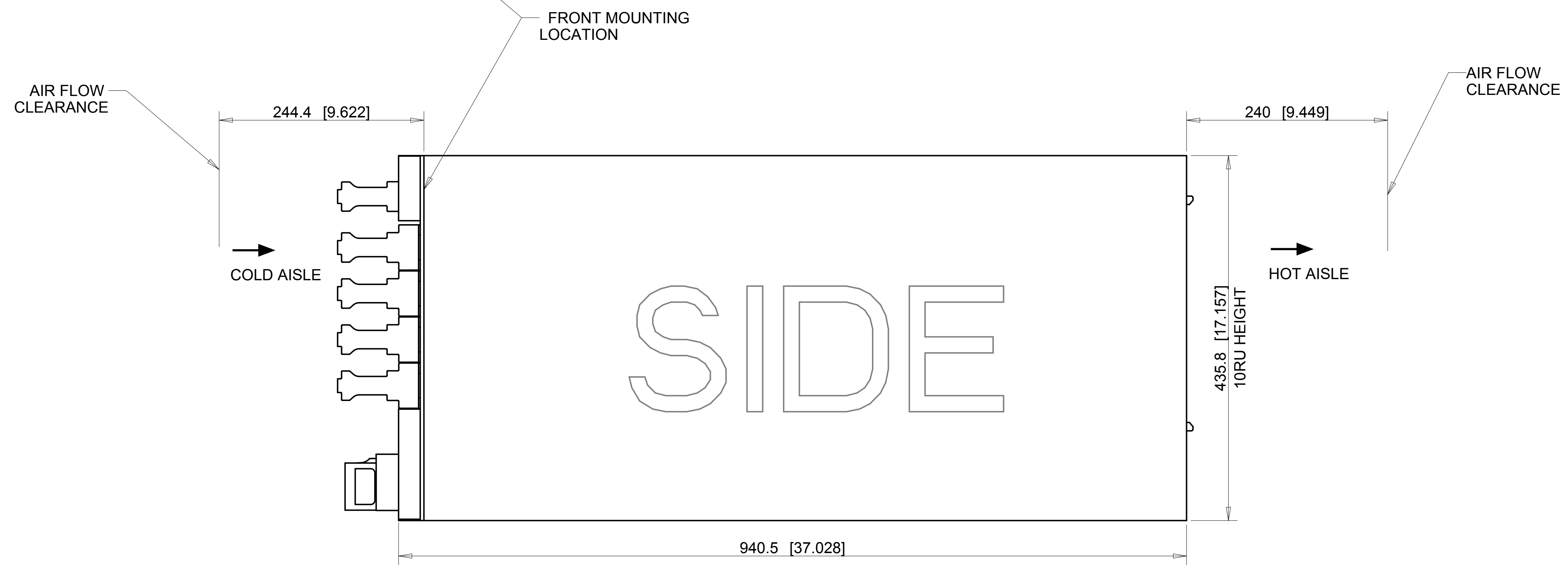


THE CONTENTS OF THIS DOCUMENT ARE PROPRIETARY TO ARISTA NETWORKS, INC., ISSUED IN STRICT CONFIDENCE AND SHALL NOT BE DISCLOSED TO OTHERS OR USED FOR PURPOSES OTHER THAN INTENDED WITHOUT THE WRITTEN APPROVAL OF ARISTA NETWORKS, INC.

REV	BY	REVISIONS	
		DESCRIPTION	DATE
01	MHH	INITIAL RELEASE	08/07/20
A2	MHH	ADDED NOTE ON PAGE 2	08/19/20
A3	MHH	CORRECTED NOTE ON PAGE 2	08/25/20
A4	MHH	CORRECTED TABLE ON PAGE 2	09/23/20
A5	MHH	ADDED DIM FOR FABRIC MODULE	03/15/22
A6	MHH	ADDED KOZ AND DIMENSIONS TO PAGE 2	07/11/23
A7	MHH	CORRECTED TERMINOLOGY	07/31/23



DIMENSIONS ARE IN MILLIMETERS UNLESS OTHERWISE SPECIFIED

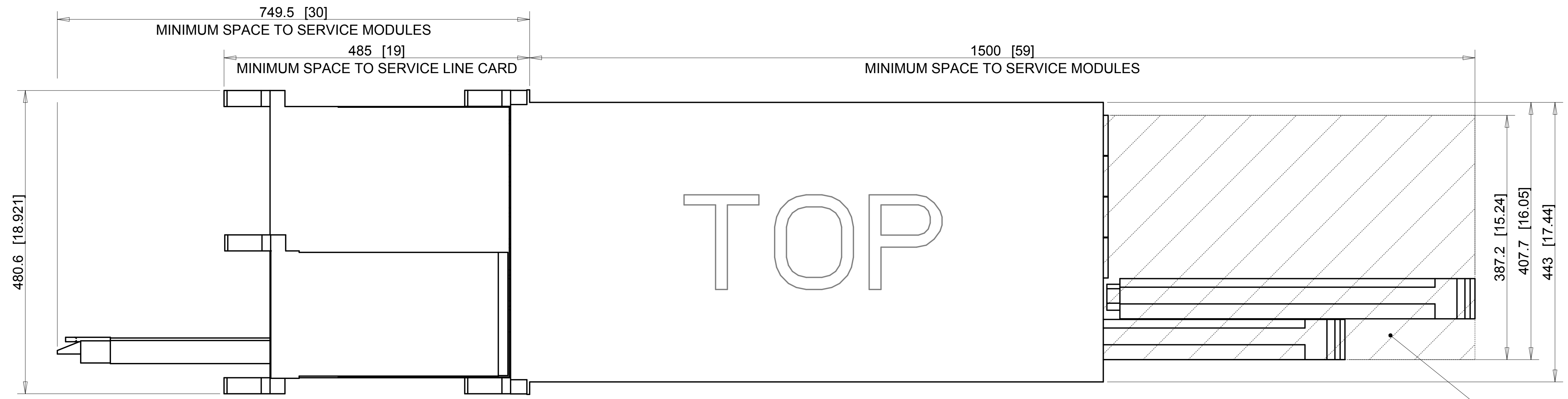
ARISTA

TITLE: DOC, 10RU, 7804R3, PRODUCT & MOUNTING DIMENSIONS

Pro/E ASSEM FILE: DN4-SIMPLIFIED | Pro/E DRW FILE: DN4-SIMPLIFIED

SIZE	SCALE	SHEET	DRAWING NO.	REV
D	0.10	1 OF 2	DOC-04724-01	A7

THIRD ANGLE PROJECTION



SERVICE KEEPOUT: KEEP SPACE CLEAR OF CABLES AND OTHER OBSTRUCTIONS.

****NOTE:** MINIMUM SPACE FOR SERVICING COMPONENTS MAY DEPEND ON CUSTOMER DEPLOYMENT CONSTRAINTS (SUCH AS CABLE MANAGEMENT). PLEASE ENSURE THAT DEPLOYMENT LOCATION IS VALIDATED FOR SUFFICIENT SERVICE SPACE.

DESCRIPTION	WEIGHT	
FULL SYSTEM* DCS-7804	203.2	kg
	447.6	lbs
CHASSIS ONLY DCS-7804-CH	74	kg
	163	lbs
FABRIC MODULE* DCS-7804R3-FM	9.1	kg
	20	lbs
LINE CARD* e.g. DCS-7800R3K-36DM	10	kg
	22	lbs
SUPERVISOR MODULE* e.g. DCS-7800-SUP	2.9	kg
	6.3	lbs
POWER SUPPLY* e.g. PWR-D2-3041-DC	3.6	kg
	8	lbs

* Weights provided as an example. Please refer to the published datasheets for specific component weights.



TITLE DOC, 10RU, 7804R3, PRODUCT & MOUNTING DIMENSIONS			
Pro/E ASSEM FILE: DN4-SIMPLIFIED		Pro/E DRW FILE: DN4-SIMPLIFIED	
SIZE	SCALE	SHEET	DRAWING NO.
D	0.10	2 OF 2	DOC-04724-01
			REV A7