

THE CONTENTS OF THIS DOCUMENT ARE PROPRIETARY TO ARISTA NETWORKS, INC., ISSUED IN STRICT CONFIDENCE AND SHALL NOT BE DISCLOSED TO OTHERS OR USED FOR PURPOSES OTHER THAN INTENDED WITHOUT THE WRITTEN APPROVAL OF ARISTA NETWORKS, INC.

REV		BY	DESCRIPTION	DATE
A0	MHH		INITIAL RELEASE	05/24/23
A1	MHH		ADDED NOTE TO PAGE 2	07/06/23
A2	MHH		CORRECTED TERMINOLOGY	07/31/23

103 [4] FULLY POPULATED
 916.9 [36] FULLY POPULATED

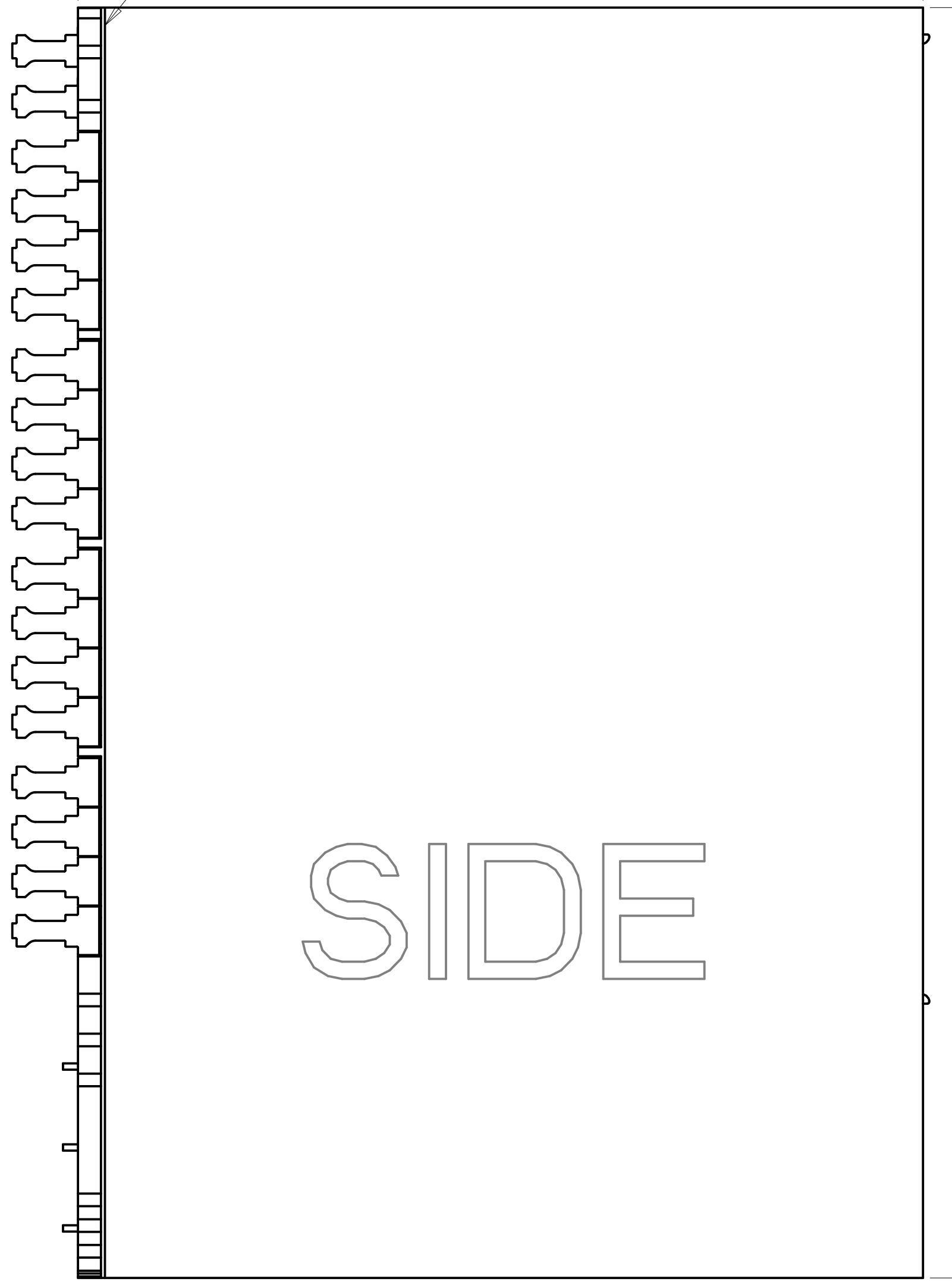


AIR FLOW CLEARANCE
 240 [9.449]
 FRONT MOUNTING LOCATION

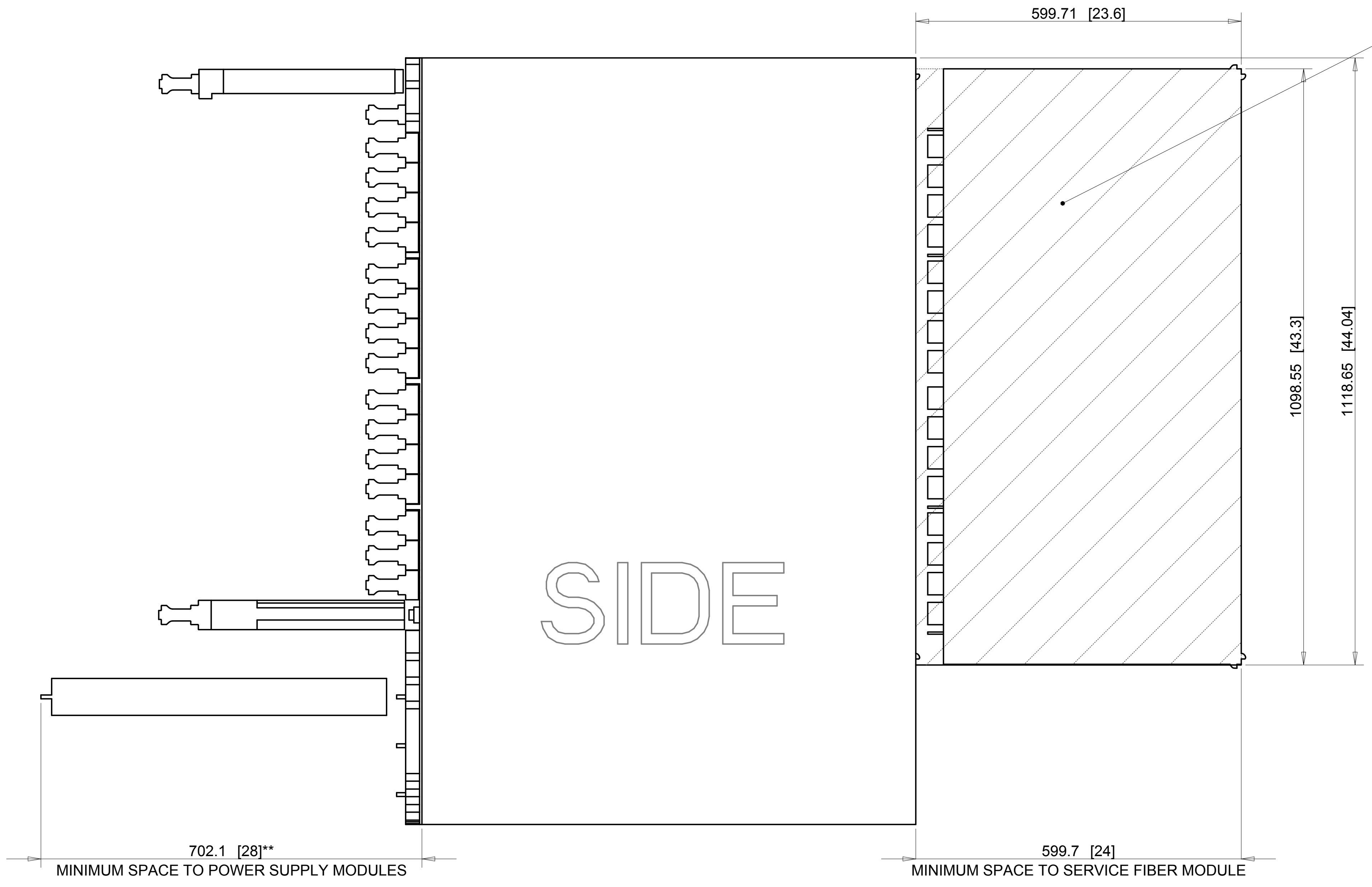
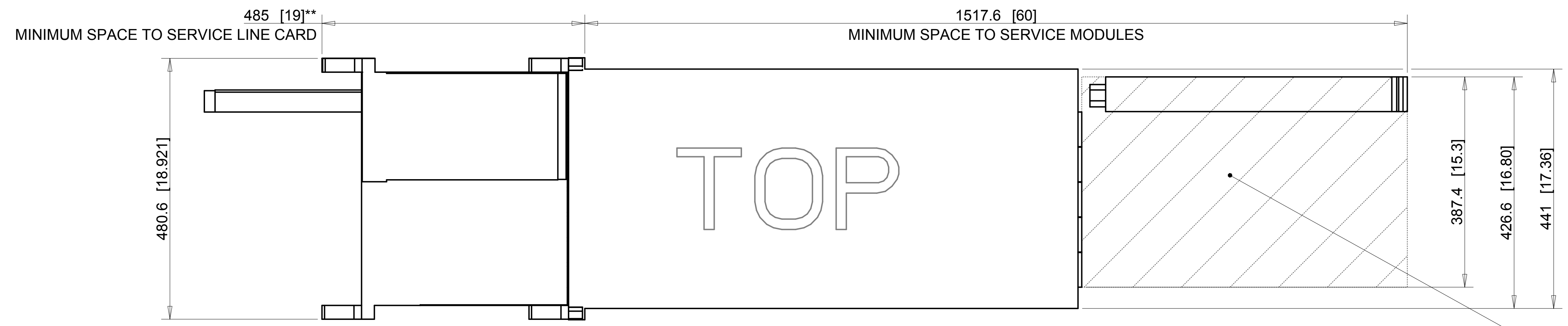
AIR FLOW CLEARANCE
 240 [9.449]

→
 COLD AISLE

→
 HOT AISLE



DIMENSIONS ARE IN MILLIMETERS UNLESS OTHERWISE SPECIFIED		ARISTA	
TITLE DOC, 32RU, 7816L, PRODUCT & MOUNTING DIMENSIONS			
Pro/E ASSEM FILE: DN16_SIMPLIFIED.LYNX		Pro/E DRW FILE: DN16_SIMPLIFIED.LYNX	
SIZE	SCALE	SHEET	DRAWING NO.
D	0.10	1 OF 2	DOC-06349-01
THIRD ANGLE PROJECTION			REV A2



SERVICE KEEPOUT: KEEP SPACE CLEAR OF CABLES AND OTHER OBSTRUCTIONS.

DESCRIPTION	WEIGHT
FULL SYSTEM* DCS-7816L	691 kg
	1523 lbs
CHASSIS ONLY DCS-7816L-CH	219 kg
	480 lbs
FABRIC MODULE* e.g. DCS-7816LR3-FM	32 kg
	70.5 lbs
LINE CARD* e.g. DCS-7800R3K-36DM	10 kg
	22 lbs
SUPERVISOR* e.g. DCS-7816-SUP	3 kg
	6.3 lbs
POWER SUPPLY* e.g. PWR-D2-3041-DC	4 kg
	8 lbs

* Weights provided as an example. Please refer to the published datasheets for specific component weights.

**NOTE: MINIMUM SPACE FOR SERVICING COMPONENTS MAY DEPEND CUSTOMER DEPLOYMENT CONSTRAINTS (SUCH AS CABLE MANAGEMENT) PLEASE ENSURE THAT DEPLOYMENT LOCATION IS VALIDATED TO SUFFICIENT SPACE FOR SERVICING

ARISTA

TITLE
DOC, 32RU, 7816L, PRODUCT & MOUNTING DIMENSIONS

PROJ ASSEM FILE: DN16_SIMPLIFIED.LYNX	PROJ DRW FILE: DN16_SIMPLIFIED.LYNX
SIZE: D	SCALE: 0.10
SHEET: 2 OF 2	DRAWING NO.: DOC-06349-01
REV: A2	